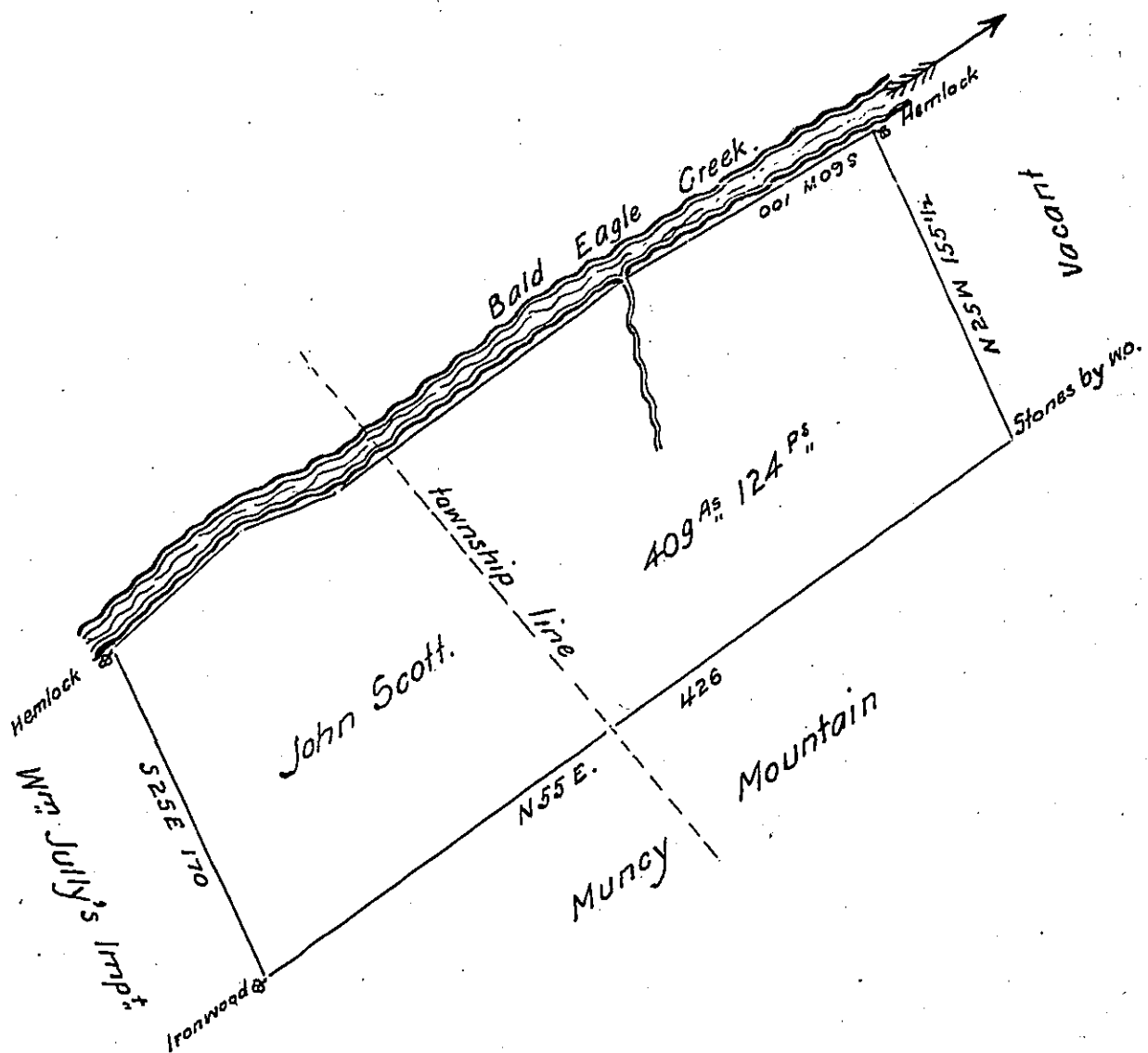


Courses & Dist.
down Bald Eagle

S 60 W.	100.
S 55 W.	203
S 71 W.	44.
S 50 W.	79
<hr/>	
426.	



A Draught of a tract of land situate in Patton & Halfmoon townships in Centre County containing four hundred and nine acres 124 perches & the usual allowance of six $\frac{1}{2}$ Cent for roads &c^a surveyed for John Scott May 28th 1806 in pursuance of a warrant dated April 2^d 1806.

James Harris D.S.

Samuel Cochran Esq^r. }
Surv^r. Genl. ~ }

IN TESTIMONY that the above is a copy of the original remaining on file in the Department of Internal Affairs of Pennsylvania, made conformably to an Act of Assembly approved the 16th day of February, 1833, I have hereunto set my Hand and caused the Seal of said Department to be affixed at Harrisburg, this twenty-third day of October 1907

Henry Horvath
Secretary of Internal Affairs.